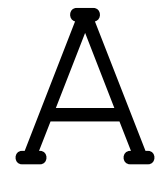


ANACOCO HIGH SCHOOL

2013-2014 • Vernon Parish • Grades 7-12



367 Enrolled • 8% Special Education • 40% Free & Reduced Lunch • Site Code: 058001

SPS = 110.4

HOW DID STUDENTS PERFORM IN GRADES 3-8?

Students are assessed on their performance towards meeting grade-level expectations.

LEVEL	SCHOOL	DISTRICT	STATE	ABOVE Grade Level	AT Grade Level
Above Grade Level	46%	34%	24%		
At Grade Level	42%	49%	45%		
Below Grade Level	12%	17%	32%		

ABOVE Grade Level AT Grade Level

IMPROVED DECLINING

HOW DID STUDENTS PERFORM ON HIGH SCHOOL EXAMS?

Students are assessed on their performance towards meeting grade-level expectations.

LEVEL	SCHOOL	DISTRICT	STATE	ABOVE Grade Level	AT Grade Level
Above Grade Level	46%	30%	22%		
At Grade Level	43%	45%	40%		
Below Grade Level	10%	25%	39%		

ABOVE Grade Level AT Grade Level

STEADY IMPROVED

NOTE: The two tables above include students who take LAA 1 and LAA 2. View how their performance is measured [here](#). Schools that are K-2 configurations have accountability data based on a paired school, designated by its district.

HOW MANY CREDITS DID STUDENTS EARN BY THE END OF FRESHMAN YEAR?

Schools with grade 8 are accountable for the number of credits earned and the number of students who dropout by the end of grade 9.

CREDITS	SCHOOL	DISTRICT	STATE
6+	>95%	85%	81%
5-5.5	<5%	<5%	<5%
3.5-4.5	<5%	<5%	<5%
3 or Less OR Dropout	<5%	8%	11%

WHAT PERCENT OF STUDENTS GRADUATED?

The cohort graduation rate is the percent of students who enter the ninth grade and successfully graduate four years later.

	SCHOOL	DISTRICT	STATE	12/13 vs 11/12
4 year diploma	81%	82%	74%	

IMPROVED

ARE STUDENTS PREPARED FOR COLLEGE & CAREER SUCCESS?

A score of 18 or above on the ACT indicates students have minimum proficiency for college & career success.

SCORE OF 18+

	SCHOOL	DISTRICT	STATE	13/14 vs 12/13
TOPS Honors Score of 27+	31%	8%	8%	
TOPS Performance Score of 23+	66%	29%	22%	
TOPS Opportunity Score of 20+	91%	54%	42%	
ACT Score of 18+	94%	72%	59%	

DECLINING

WHAT KIND OF DIPLOMAS & CREDITS DID STUDENTS EARN?

The graduation index measures the strength of a diploma and credits that a high school graduate earned.

DIPLOMA + CREDITS	SCHOOL	DISTRICT	STATE
High School Diploma + passing score on college credit exam*	7%	<5%	<5%
High School Diploma + passing score on college credit course*	33%	34%	34%
High School Diploma	41%	46%	36%
Nongraduates	10%	15%	23%



DID THIS SCHOOL MAKE PROGRESS WITH STUDENTS WHO STRUGGLED ACADEMICALLY?

Schools earn progress points for students who were below grade level but who exceeded expectations in the current year.

# STUDENTS Below Grade Level	% EXCEEDING EXPECTATIONS	% DISTRICT	% STATE
ELA (K-8)	70%	59%	56%
Math (K-8)	N/A	N/A	N/A
ELA (9-12)	N/A	N/A	N/A
Math (9-12)	N/A	N/A	N/A

HOW DID DIFFERENT GROUPS OF STUDENTS PERFORM?

ALL STUDENTS:	STUDENTS WITH DISABILITIES:	STUDENTS ELIGIBLE FOR FREE & REDUCED LUNCH:
88% on or above grade level	40% on or above grade level	84% on or above grade level
13/14 vs 12/13 DECLINING	13/14 vs 12/13 DECLINING	13/14 vs 12/13 DECLINING

2012-2013

2013-2014

A SPS 108.2

A SPS 110.4

As Louisiana transitions to higher standards and new assessments, the State Board of Education and the Louisiana Department of Education are committed to ensuring that educators and students have time to learn and adjust to the new expectations. To understand Louisiana's transition policies during this time to learn, [click here](#).

What are my school and course choice options?

Where can I find additional performance information?